

Top Stories This Week

- RBI cuts repo rate by 25 bps from 8% to 7.75%
- November IIP at 5 month high of 3.8% vs -4.2%(MOM). DEC CPI inflation @ 5% vs 4.38% (MOM)
- Tata Steel has reported marginal rise of three per cent in its December quarter sales at 21.29 lakh tonnes against 20.66 lakh tonnes in the same period last year
- Max India May be split into three divisions — insurance, healthcare and specialty films.
- Fertiliser Minister Ananth Kumar says `40,000 cr investment in fertiliser sector in next 4 year
- GOI planning to raise Rs 8,000 crore through disinvestment in IOC ET. Planning to sell 10% Stake in IOC this fiscal - ET.
- Govt Unlikely To Reduce 3G Spectrum Reserve Price. Telecom Commission To Take Up Pricing Issue On January 19 - Sources
- RBI Issues Guidelines For Banks To Set Up Insurance Ventures. Net Worth Of A Bank Should Not Be Less Than `1,000 Cr. Net NPAs Of Bank Should Not Be More Than 3%
- TCS Q3 Net Profit Up 2.9% At 5,444 Cr (QoQ). Revenue Up 2.9% At 24,501 Cr (QoQ).
- RELIANCE Q3 Net Profit at Rs.5085 Cr Vs Rs.5511 cr (YOY). Total income at Rs.80196 cr Vs Rs. 103521 Cr (YOY)

Weekly Indices Change

Index	Close	P. Close	Chg. (%)
SENSEX	28121	27458	2.41
NIFTY	8513	8284	2.76
MIDCAP	10633	10426	1.99
SMLCAP	11309	11198	0.99
METAL	10052	10487	-4.15
OIL&GAS	9754	9839	-0.86
AUTO	19326	18835	2.61
TECK	6009	5899	1.86
BANKEKX	22021	21346	3.16
IT	10990	10752	2.21
FMCG	8154	7835	4.07
HC	14894	14691	1.38
PSU	8216	8144	0.88
CD	9924	9708	2.22
POWER	2132	2060	3.50
CG	16200	15462	4.77
REALTY	1619	1531	5.75

Global Indices

DOW	17511	17737	-1.27
NASDAQ	4634	4704	-1.49
FTSE	6550	6501	0.75
NIKKEI	16864	17197	-1.94
HANGSENG	24103	23919	0.77

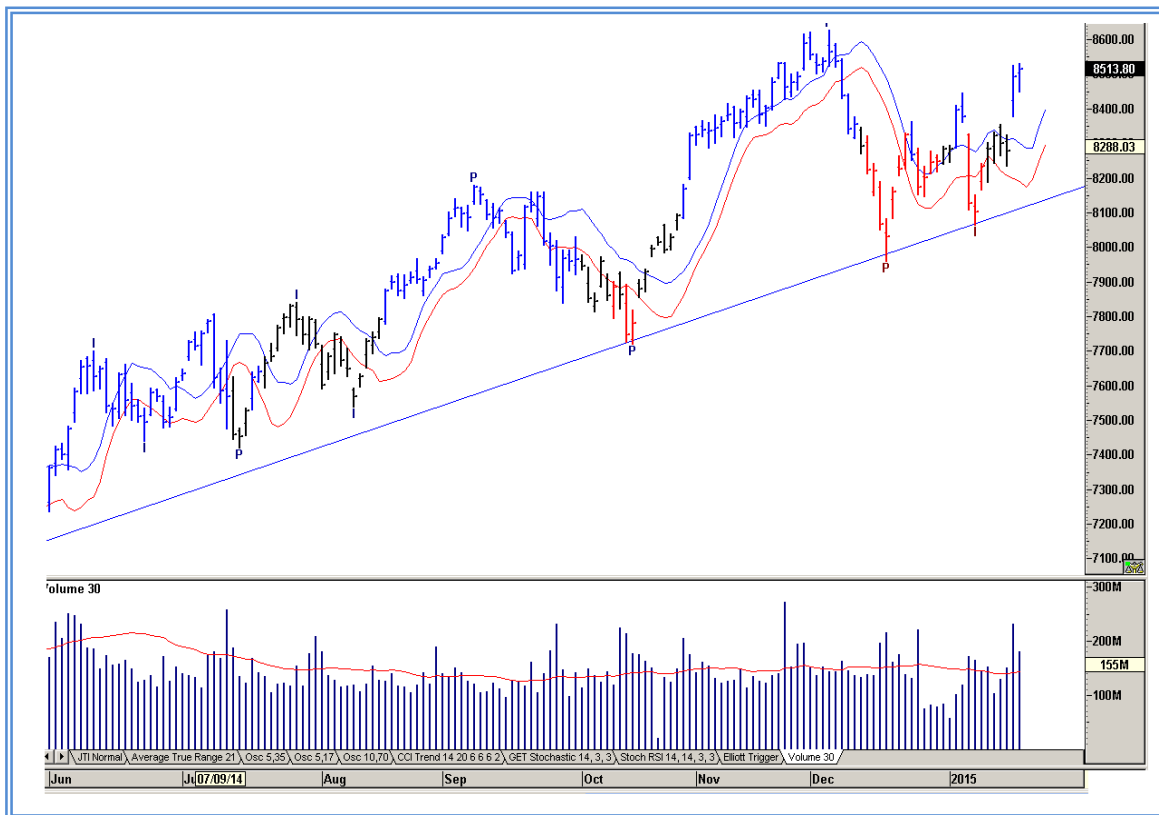
Top Gainers Weekly

Scrip	Price	% Chg
Intellect Design	126.95	31.01
Sun TV Network Ltd.	418.15	20.24
Thomas Cook (I)	208.90	18.83
HDIL	80.45	16.59
BEML Ltd.	919.35	16.37

Top Losers Weekly

Scrip	Price	% Chg
Hindalco Indus.	138.55	9.18
PetronetLNG	197.60	9.02
JK Tyre & Industries	125.70	8.25
Sesa Sterlite	193.35	8.19
Pfizer Ltd.	2099.60	7.58

Nifty Corner



Support & Resistance						
S3	S2	S1	Nifty	R1	R2	R3
8200	8350	8400	8513	8570	8650	8750
Moving Averages						
20DMA		50DMA		100DMA		200DMA
8285		8345		8175		7735

Market Commentary

Key benchmark indices registered impressive gains in the week ended Friday, 16 January 2015, mainly on the back of sharp rally in the indices in the penultimate trading session of the week on Thursday, 15 January 2015, triggered by the Reserve Bank of India's (RBI) surprise announcement of a cut in its main lending rate viz. the repo rate by 25 basis points in an unscheduled monetary policy review on that day. The Nifty gained in three out of five trading sessions in the week. For the next week Nifty likely to trade in range between 8650 - 8750 in the upper side and 8350 - 8200 in the lower side.

Stocks at 52 wk High

Scrip	Cmp
Asian Paints	843.45
Dewan Housing	487.60
HDFC Bank	1001.35
Indiabulls Hsg	566.35
SKS Microfin	469.50

Stocks at 52 wk Low

Scrip	Cmp
DB (Int) Stock	56.40
Den Networks	120.70
Fineotex Chem	236.00
Monte Carlo	483.50
Sunteck Realty	221.60

FII Activity

Date	Figures in crore
12/01	244.95
13/01	235.09
14/01	-69.74
15/01	1738.24
16/01	1099.93
Total	3248.47

DII Activity

Date	Figures in crore
12/01	-331.18
13/01	46.06
14/01	-223.98
15/01	-527.27
16/01	-716.91
Total	-1753.28

Weekly Stock Idea

Scrip	B/S	Cmp	Tgt
JSWHL	B	1004	1070
ROLTA	B	106	130
TVTODAY	B	219	245
WONDERELA	B	331	365
OPTOCIRCUT	B	25	29

Buy on dips & Sell on rise with Stop-loss of 3%

Volume Breakout Stocks

Scrip	Cmp
INOX Leisure	181.45
Prestige Estate	251.80
M&M Financial	307.90
CRISIL	1980.65
GRUH Finance	306.55

Week Ahead

MAJOR RESULTS/AGM MEETING THIS WEEK:

19 JAN: TATASPONGE, MINDTREE, HINDUNILVR, IBULHSGFIN, NAUKRI
 20 JAN: CANFINHOME, SOUTHBANK, KOTAKBANK, JINDALSAW, PRAJIND
 21 JAN: TATAELXSI, ZEEL, TTKPRESTIG, RAYMOND, L&TFH, ITC, CENTURYPLY
 22 JAN: TATAMETALI, ZEEMEDIA, MHRIL, MASTEK, POLARIS, HCL-INSYS,
 CAIRN, BIOCON, DISHTV,
 23 JAN: COLPAL, ULTRACEMCO, PERSISTENT, LIBERTSHOE, EDELWEISS,

VISIT US AT: WWW.INDIRATRADE.COM

Disclaimer

This report is for private circulation within the Indira Group. This report is strictly confidential and for information of the selected recipient only and may not be altered in any way, transmitted to, copied or distributed, in part or in whole, to any other person or to the media or reproduced in any form. This report should not be construed as an offer or solicitation to buy or sell any securities or any interest in securities. It does not constitute a personal recommendation or take into account the particular investment objectives, financial situations, or any such factor. The information, opinions estimates and forecasts contained here have been obtained from, or are based upon, sources we believe to be reliable, but no representation of warranty, express or implied, is made by us to their accuracy or completeness. Opinions expressed are our current opinions as of the date appearing on this material only and are subject to change without notice.